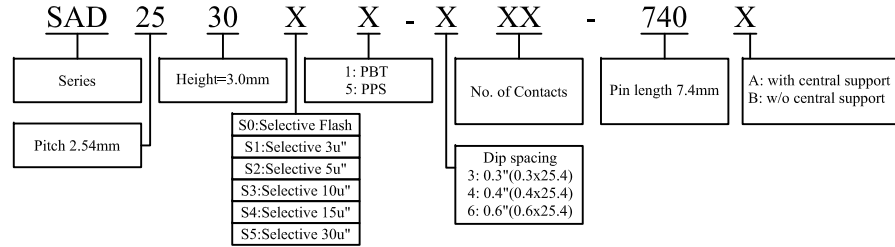


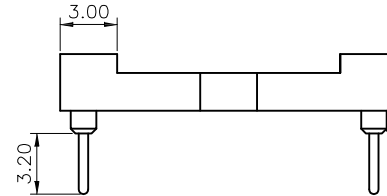
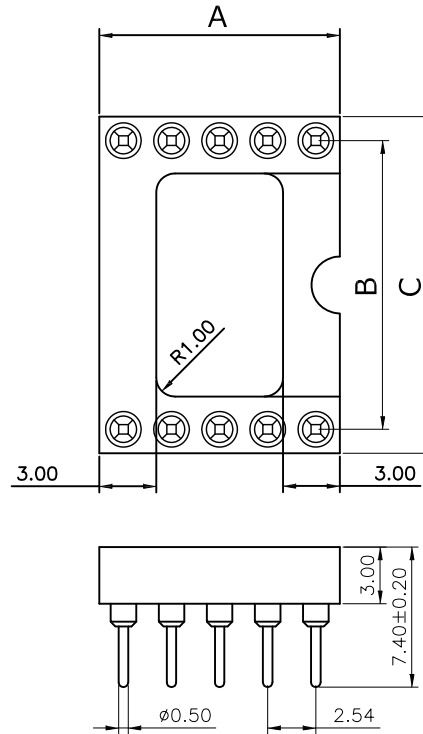
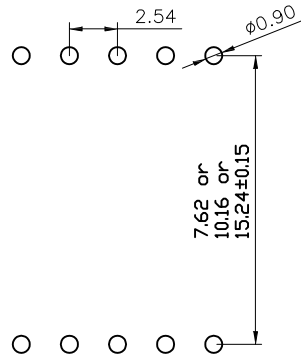
**NOTES:**

Current Rating: 3Amps/contact max.  
 Contact Resistance: 4mΩ/contact  
 Insulation Resistance: 1000MΩ Min V=100V  
 Operating Voltage: 60VAC/DC  
 Temperature Range: -40°C ~ +105°C  
 Insulator: PBT or PPS, UL94V-0  
 Pin(outer sleeve): Brass, machined CuZn38Pb2  
 Clip(contact 4 fingers): Beryllium copper, heat treated  
 Plating(out sleeve):  
 Tin Plating: 80u"Ni, 200u"Sn  
 Gold Plating: 80u"Ni, 0.8u"Au  
 Plating(contact): 80u"Ni, gold or Tin plated  
 RoHS Compliant


**ORDER INFORMATION**



- S0: Selective Flash
- S1: Selective 3u"
- S2: Selective 5u"
- S3: Selective 10u"
- S4: Selective 15u"
- S5: Selective 30u"



No. of Pin	A	B	C
6	7.60	7.62	10.1
8	10.1	7.62	10.1
10	12.6	7.62	10.1
14	17.7	7.62	10.1
16	20.3	7.62	10.1
18	22.8	7.62	10.1
20	25.3	7.62	10.1
22	27.8	7.62	10.1
24	30.4	7.62	10.1
28	35.5	7.62	10.1
20	25.4	10.16	12.6
22	27.8	10.16	12.6
24	30.4	10.16	12.6
28	35.5	10.16	12.6
24	30.5	15.24	17.7
28	35.5	15.24	17.7
32	40.6	15.24	17.7
36	45.7	15.24	17.7
40	50.8	15.24	17.7
42	53.3	15.24	17.7
48	60.9	15.24	17.7
50	63.5	15.24	17.7

 <p>Morecrafts Technology                  TEL: +886-2-2966-1326                  FAX: +886-2-2966-1352                  www.morecrafts.com.tw</p>	PART NO.	SAD2530XX-XXX-740X	DRAWN	Andrew						
	DRAWING NO.	SAD2530XX-XXX-740X	APPROVED	Brian						
			DATE	2012/10/26						
TITLE: Machine pin IC socket 2.54mm	REV. A0	TOLERANCE	.X ±0.25 .XX ±0.20	SCALE	NONE	UNIT	mm	NO.	DESCRIPTION	DATE