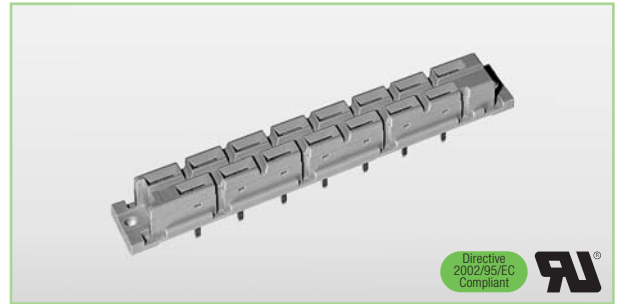


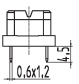
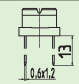
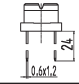
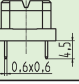
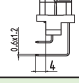
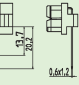
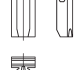
# IEC 60603-2

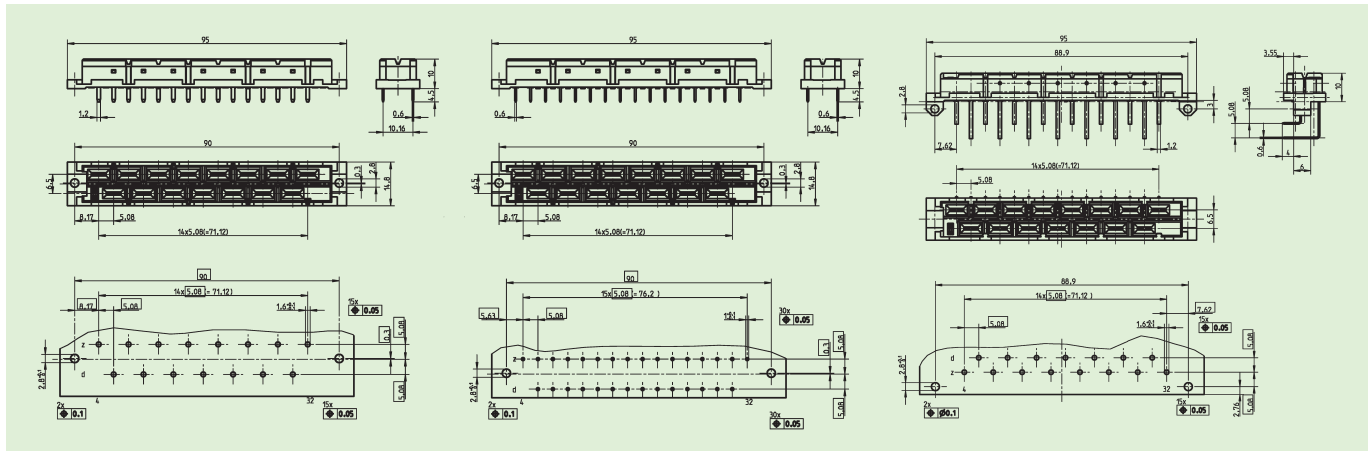
# DIN 41612

- Bauform H15 in Ergänzung an die DIN 41612  
*Type H15 in addition to DIN 41612*
- Isolierkörper aus PBT  
*Material of insulating body: PBT*
- Flache Bauformen  
*Slim line versions*
- Mit integrierter Kodierung  
*With integrated coding device*



H15

Polzahl/no of contacts		15	
	Gütek./mating class		Zubehör/Accessories
Tauchlöt 4,5 mm <i>solder pin 4.5 mm</i> 	1 (Ag)  (Sn)	05 H15ft4B-co <b>Order-No. 058917</b> 05 H15ft4SnB-co <b>Order-No. 0589112</b>	
Tauchlöt 13 mm <i>solder pin 13 mm</i> 	1 (Ag)	05 H15ft13-co <b>Order-No. 052131</b>	
Tauchlöt 24 mm <i>solder pin 24 mm</i> 	1 (Ag)	05 H15ft24-co <b>Order-No. 056161</b>	
Tauchlöt 4,5 mm Doppelpin <i>solder pin 4.5 mm double pin</i> 	1 (Ag)	05 H15ftdB-co <b>Order-No. 058918</b>	
Invertiert 90° Tauchlöt <i>reversed 90° solder pin</i> 	1 (Ag)	05 H15fw-co <b>Order-No. 056141</b>	
Invertiert 90° Tauchlöt, einreihig gewinkelt <i>reversed 90° solder pin,                      single row angled</i> 	1 (Ag)	05 H15fw/k1-co <b>Order-No. 056241</b>	
Kodierkeile (grün) <i>coding key (green)</i> 			05 H-cod <b>Order-No. 0560115600C99</b>



Technische Daten Seite 16 und 17.  
*Technical specifications page 16 and 17.*